

PACIFIC VALVE SERVICES INC.



9720 - 62 Avenue

Edmonton, Alberta

T6E 0E3

PH: 780-469-3972

Email:
info@pacificvalve.com



Pacific Valve Services – Edmonton

9750 – 62 Avenue, Edmonton Alberta T6E 0E3
Phone: 780-463-3972 Email: info@pacificvalve.com

PACIFIC VALVE SERVICES SUMMARY

Pacific Valve Services Inc. is a leading provider of valves, chokes, and repair services to the oil and gas industries. Specializing in API 6A products, Pacific Valve works with the drilling contractors, production testers and other process owners to control and direct process pressures and flows.

We provide skilled, high quality valve technicians for all your valve service needs. Our Mobile Field Service Trucks are equipped for Hydro Testing up to 10,000 PSI. We also have skilled joint-integrity technicians to work with your BOP Stack, Frac Head or Gas Plant and Facility service. Pacific Valve Services offers 24-hour Emergency Service, seven days per week. Our mobile service units can be dispatched to work sites anywhere in Alberta, British Columbia, Saskatchewan and Manitoba.

PACIFIC VALVE SERVICES PROFILE

Since 1965, Pacific Valve Services Inc. has provided valve sales, supply, and maintenance and repair services to the oil and gas industries from our southeast Edmonton location. Our company, while capable of handling large complex projects, is also reputed for its ability to effectively accommodate smaller, specialized needs. Our flexibility allows us to quickly dispatch multi-skilled technicians to respond to emergency situations, and to complete repairs or maintenance efficiently and economically.

PVS specializes in API 6A type gate valves, chokes, mud valves, kellycocks and safety valves, as well as in the design and manufacture of kill and choke manifold systems, frac heads and ball catcher assemblies.

At Pacific Valve Services, our people are our company.

Currently, PVS management is supported by more than 15 dedicated technical and administrative staff, working in conjunction with our shop and field supervisors. Their commitment, integrity and reliability - reinforced with our strong technological and financial resource base - ensure the delivery of the highest standard of service available to our clients.

PACIFIC VALVE SERVICES – IN-HOUSE VALVE REPAIR SERVICE



Pacific Valve Services is the place for all your valve needs and services. Our equipment and staff is always ready for any valve repair or service challenge.

Our Edmonton facility consists of 15,000 square feet of shop space, including a machine shop, a paint booth and multiple service and repair bays. Our yards provide ample storage of equipment and service vehicles, while allowing trucks easy access for pick-up and delivery.

Pacific Valve Services provides highly skilled technicians for repairs and reconditioning on API & ANSI Valves, BOP Stack Valves, HCR & ESD Valves, Mud and Ball Valve as well as Safety Valves and Kellycocks. We provide our customers with top quality workmanship and quality assurances with *In-House Design 3D Solid works Drawings, NACE Verifications, Positive Materials Identification and Liquid Penetrant Inspections*. Custom Machine Shop Services are available to meet all of your Grinding, Lapping, Polishing, Build up and Stress Relieving needs. We also provide Non-Destructive Testing, Nitrogen Testing, Lubrication and Maintenance for any valve type.

We are proud to inform our customers that we specialize in Manifold Repair and Reconditioning, Wellhead and Pipeline Valve Services, Specialty Wellhead Repairs, Frac Head Repairs, and Ball Catcher Repairs. We are confident that we are able to provide professional grade service for all valve repair needs.

PACIFIC VALVE SERVICES – PRODUCTS



Our Edmonton warehouse is fully stocked with an inventory of \$2.5 Million. Having established an inventory of this size we are able to meet your part and accessory requirements on an international scale, as well as maintaining a turn-around for our customers that is second to none. All of our parts go through a strict Quality Control inspection.

By carrying this large inventory, we ensure that we have the parts needed to do our repairs promptly.

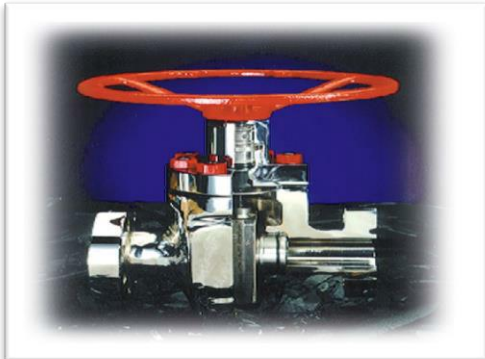


PACIFIC VALVE SERVICES – PRODUCTS & PARTS

**API 6A Valves
Parts & Components**

**API 6D Ball Valves
Choke & Kill Lines**

**Complete
Manifolds**



VALVE & VALVE PARTS

*Model M Expanding Gate
Slab Gate*

*Model FC Gate Valves
Slab Gates*

Models F, FL, FLS, & FLS-R

Model TC

Model DM

Model C

Adjustable & Positive Chokes

Model H-2

Model M-2

Model M-3

Model N-60

Quarter Turn Ball Valves

Ball Valve Body Group

All Major Internal Parts

*Complete Choke & Kill Line
Assembly*

*Hydraulic Ball Valve
Inlet & Outlet Flanges*

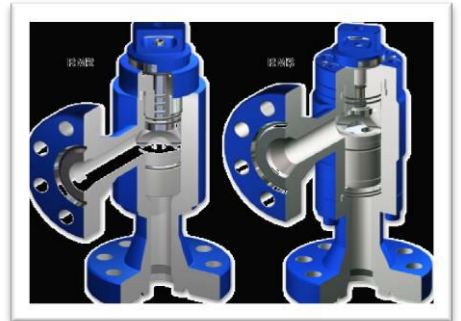
*Check Valve
Typed R Valve & Parts
CNV Check Valve & Parts*

*Hydraulic Actuators
WKM/Erichsen Actuator Kit
CNV Actuator Kit
15,000# Series Actuator Blank
Hydraulic Ball Valve*

ESD Gate Valves

*Hydraulic Standard Acting
Valves*

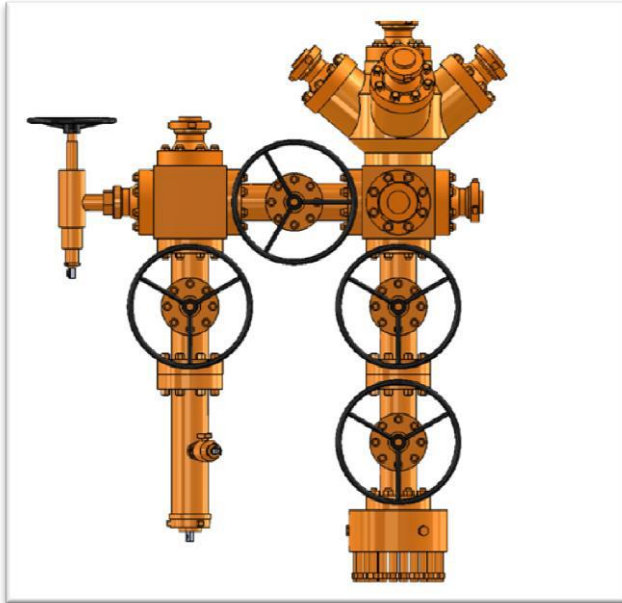
Hydraulic Reverse Acting Valves



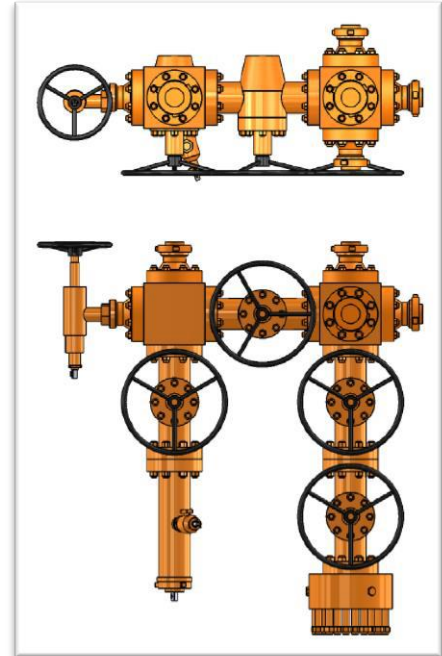
PACIFIC VALVE SERVICES – VALVE SALES

Pacific Valve Services also has the capability to build complete systems including Manifold, Frac Head and Ball Catcher Assemblies to customer's specifications and needs.

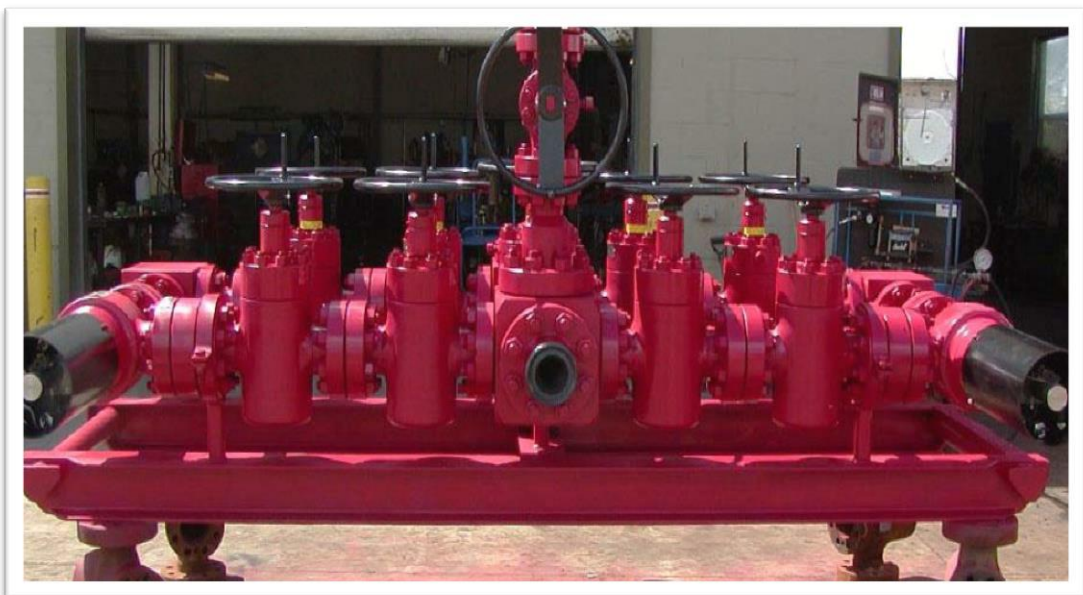
Dual Master Frachead with Buffalo Head



Dual Master Frachead with Buffalo Head



Choke & Kill Manifold System



PACIFIC VALVE SERVICES – EDMONTON CUSTOM MACHINE SHOP SERVICES



Pacific Valve Services Inc. houses a dedicated 5,000 sq. ft. Machine Shop

Our equipment includes:

- 3 Manual Turning Lathes, the largest commanding a 36" swing radius - Surface Grinder
- Mill/Drill machine
- Bandsaw
- MIG/TIG welding area for accomplishing smaller build-up work

The Machine Shop is specialized in the repair of all API 6A valves including **flange re-facing, valve bore repairs, resurfacing of gates, seats** and numerous other machine services.

PACIFIC VALVE SERVICES

24-HOUR FIELD SERVICE



Fully Equipped Mobile Service Units

Wellhead & Pipeline Valve Maintenance

BOP Stack Valve Service, Lubrication & Maintenance

Choke & Kill Manifold Maintenance & Testing on Site

Frac Head & Ball Catcher Valve Repair & On Site Testing